



CATHOLIC  
LEADERSHIP  
CENTRE

# Training Brochure



**Igniting the Hearts of Catholic Leaders in Singapore**

## Our Purpose

At Catholic Leadership Centre (CLC), we want to form and equip Catholic leaders to build a vibrant, evangelising and missionary Church.

## Who We Serve

We serve all Catholic leaders who have influence over the thinking, behaviour or development of others in their various roles.

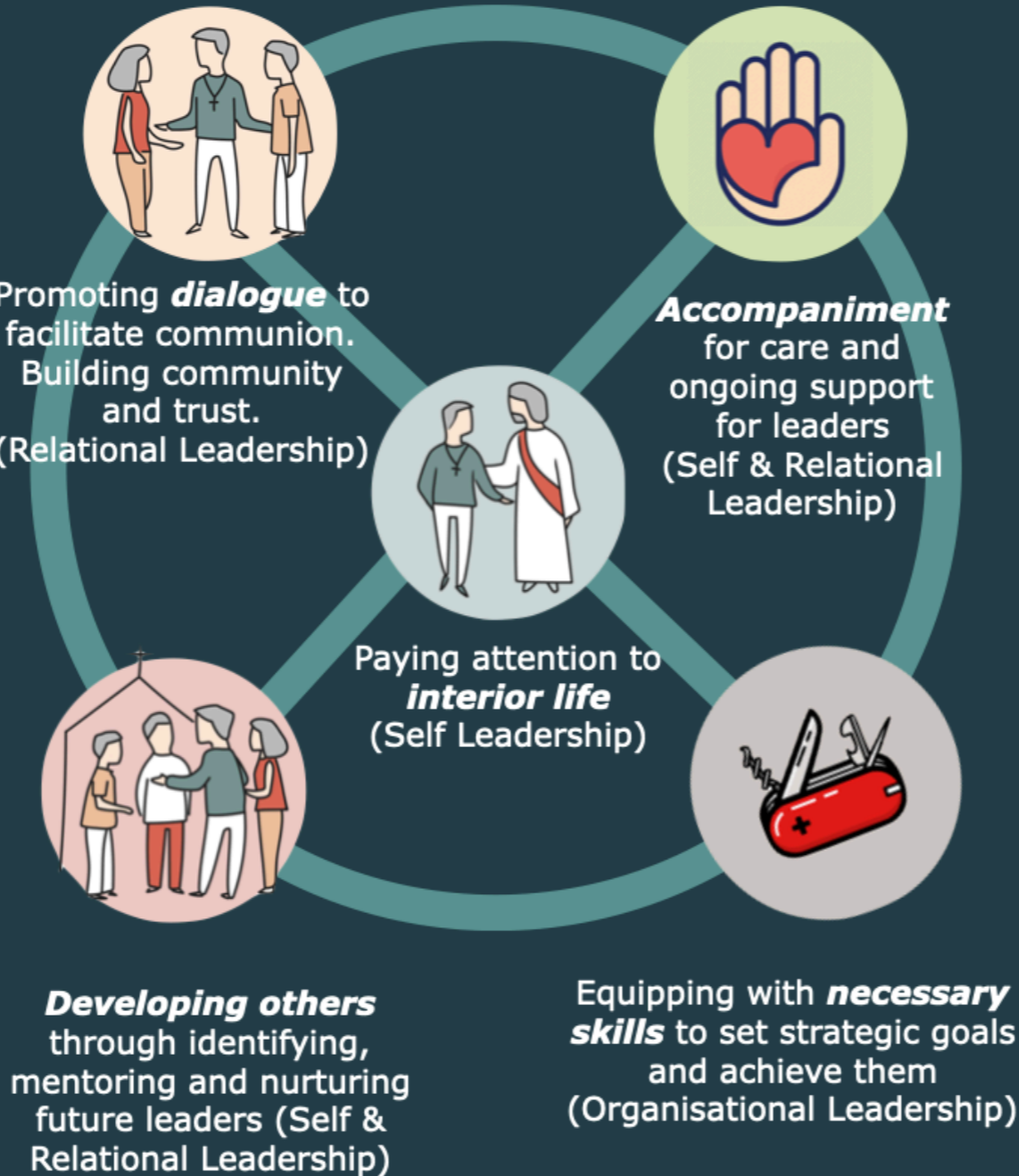
For leaders serving in the parish, we offer specialised training pathways for both Current & Emerging Leaders.

We also serve Catholic organisations that have training needs for its leaders.

**We are here for you.**

## Critical Areas of Leadership Development

There are 5 critical areas of development that Catholic leaders need in order to effectively lead those under their charge. CLC's training modules are built around these areas:



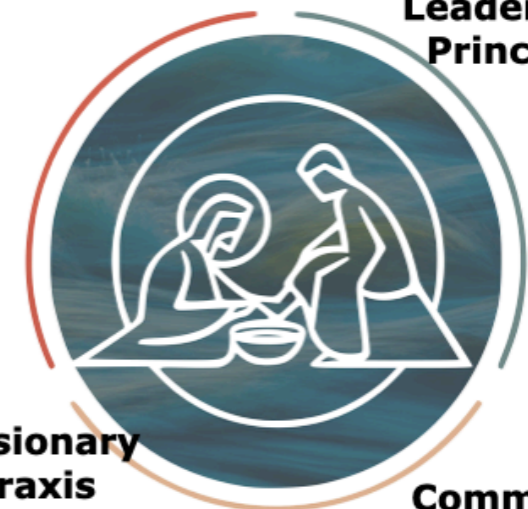
## 3 Leadership Dimensions



## Our Training Approach

Trinitarian Encounter

Leadership Principles



Missionary Praxis

Communal & Personal Accompaniment

# CLC Scheduled Training



CATHOLIC  
LEADERSHIP  
CENTRE



## **Leaders as Priest, Prophet & King: Communitarian Catholic Leadership (PPK)**

### **A Self & Relational Leadership Module**

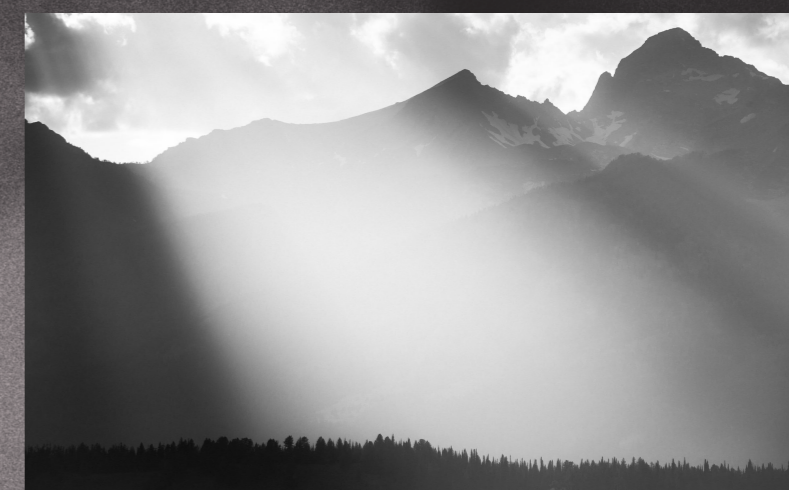
Today's leaders participate in Christ's mission as Priest, Prophet & King, gathering the diverse callings & gifts of Catholics, evangelising & building up the body of Christ, just like the garden of Eden, flourishing with life-giving biodiversity. A foundational module on communitarian leadership.



## **A Leader's Spirituality (ALS)**

### **A Self Leadership Module**

This introductory module addresses what is at the heart of spiritually fruitful Catholic leadership: one's lived relationship with Jesus Christ. It touches on growth of the interior life of the disciple-leader.



## **Facing My Shadows in the Shadow of the Almighty (SHA)**

### **A Self Leadership Module**

Many are afraid of facing our interior shadows, past hurts and wounds, which if unacknowledged or unhealed, hinder us from freely following Christ's lead and authentically leading others to Christ. Where do we find the courage and grace to face our shadows? Psalm 91:1 tells us.

# CLC Customised Training



CATHOLIC  
LEADERSHIP  
CENTRE

TO BUILD UP YOUR LEADERSHIP TEAM



## Lead Like Jesus (LLJ)

### A Self Leadership Module

A foundational module based on the servant leadership modelled by Jesus Christ. In the 3 sessions, we will explore the 4 domains of leading like Jesus: the heart, head, hands and habits.



## Building Trust (TRU1)

### A Relational Leadership Module

Through conversations and interactive group activities, participants will develop a shared understanding of trust and take personal responsibility for how they can develop deeper levels of trust at an inter-personal and group level.



## Restoring Trust (TRU2)

### A Relational Leadership Module

In this second part to the Trust module, you will identify your triggers and needs when mistrust arises and learn deep listening, empathy, questions, apology and mutual feedback in facilitating conversations to restore trust.

# CLC Customised Training



CATHOLIC  
LEADERSHIP  
CENTRE

TO BUILD UP YOUR LEADERSHIP TEAM



## Leadership Values: Crucible Events (CE)

### A Relational Leadership Module

Discover your leadership values forged from your own life experience. Get to know one another as unique children of God (beyond our tasks and functions), through sharing your leadership story.



## Awareness & Accompaniment (AA)

### A Relational Leadership Module

This formation is about supporting leaders to grow in self-awareness, as well as relational awareness within a group, experiencing being accompanied within the community and so, in turn, accompanying others entrusted to them.



## Purpose of Parish (POP)

### A Relational Leadership Module

Why does the Parish exist? Is it still relevant today? It is when leaders understand the “why” according to the ‘mind of Christ’ (1 Cor 2:16) that they may discern the ‘how’ of their Parish’s mission. Drawing from Vatican II and subsequent church teachings and pastoral reflections, this module is foundational for Parish leaders.

# CLC Customised Training



CATHOLIC  
LEADERSHIP  
CENTRE

TO ENHANCE YOUR LEADERS' PRACTICAL SKILLS



## **Purpose, Strategy & Planning (PSP)**

### **An Organisational Leadership Module**

A practical workshop for leaders and team members to critically examine their Purpose, Vision & Mission, review and formulate strategic plans, goals & objectives, and execute in a timely & effective manner.



## **Facilitate Participative Meetings (FPM)**

### **An Organisational Leadership Module**

Learn key techniques in facilitating effective group discussions or meetings to harness group wisdom for decision-making, routine discussions, planning and learning.

# Elisha

## Emerging Leaders Initiative



CATHOLIC  
LEADERSHIP  
CENTRE

### Why Elisha

**Intentionally identify, train & nurture successive generations of Catholic leaders.**

**Support Parishes in training and integrating emerging leaders through Parish Mentors.**

**It takes a village!**

### At One Glance

- **For those in their late 20s to early 40s committed to building the Kingdom of God & earmarked for leadership role in Parish**
- **Duration: 1 year**
- **8 modules**

### Key Features

**Emerging Leaders will:**

- **Journey with other Emerging Leaders in small groups, facilitated by CLC Group Facilitators.**
- **Journey with Parish Mentors in Group Mentoring Circles, supported by CLC Group Facilitators.**
- **Interiorise through 1-to-1 helps such as spiritual direction, Christian leadership coaching and so on.**

# Elisha

## Emerging Leaders Initiative

### Curriculum With CLC



CATHOLIC  
LEADERSHIP  
CENTRE

#### 1st Half 2022

#### Spiral I Modules (Self & Relational)

**Lead Like Jesus (LLJ):** Servant leadership modelled on Jesus Christ in the dimensions of Heart, Head, Hands & Habits [16 hours]

**Building Trust (TRU I):** What fosters or destroys Trust, the foundation of all relationships, and how to make Group Agreements [6 hours]

**Restoring Trust (TRU II):** Handling Tensions in the Community [6 hours]

**Reflective Group Convos (RGC):** Guided personal theological reflection; experience listening and group sharing in a safe space. Supported by a CLC Group Facilitator [6 hours]

#### 2nd Half 2022

#### Spiral II Modules (Organisational & Relational)

**Purpose of a Parish (POP):** Why a Parish exists (reflecting with the heart and mind of the Church) [2.5 hours]

**Strategic Pastoral Planning & Execution (SPE):** Practical steps to take in pastoral planning and implementation [3.5 hours]

**Facilitate Participative Meetings (FPM):** Practical pointers when chairing/facilitating meetings [6 hours]

**Healthy Group Convos (HGC):** Enable Emerging Leaders and Parish Mentors to regularly dialogue, share experience and grow in a safe space in group mentoring circles. Supported by a CLC Group Facilitator [6 hours]



# Register for Scheduled Training

CLC offers scheduled training modules at various times of the year that are open to registration from individuals and small groups. For more information on when these are available, go to: [www.catholicleader.sg/training-modules/](http://www.catholicleader.sg/training-modules/)

## Need Customised Training?

CLC also offers customised tracks for parishes and organisations, co-curated with Parish Priests/Heads of Organisations that can be conducted at the Parish/Organisation residence.

To enquire, explore options or join our mailing list to receive latest updates about CLC, write to us at: [enquiry.clc@catholic.org.sg](mailto:enquiry.clc@catholic.org.sg)



WWW

[www.catholicleader.sg](http://www.catholicleader.sg)



[www.facebook.com/CatholicLeader.SG](http://www.facebook.com/CatholicLeader.SG)



[www.catholicleader.sg/contact-us/](http://www.catholicleader.sg/contact-us/)

Igniting  
The Hearts of  
Catholic  
Leaders  
In Singapore

---



CATHOLIC  
LEADERSHIP  
CENTRE